

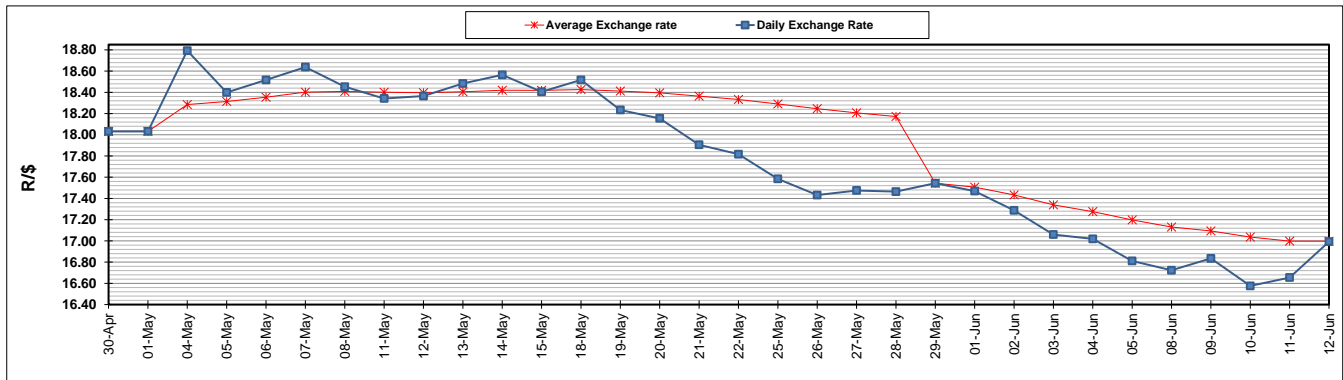
	PETROL 95 ULP	PETROL 93 ULP & LRP	DIESEL 0.05%	DIESEL 0.005%	ILL. PAR.
GAUTENG PUMP PRICE (SA c/l) AS FROM 03/06/2020	1,340.000	1,320.000	-	-	-
WHOLESALE PRICE (SA c/l) AS FROM 03/06/2020	-	-	1,130.560	1,138.960	489.828
SINGLE NATIONAL MAXIMUM RETAIL PRICE	-	-	-	-	597.000
BASIC FUEL PRICE - 12/06/2020 (SA c/l)	521.472	503.090	534.435	537.622	481.686
PRESS RELEASE CONTRIBUTION TO BFP 03/06/2020 - 12/06/2020 (SA c/l)	392.770	382.770	379.630	388.030	285.128
UNIT OVER/(UNDER) RECOVERY - 12/06/2020 (SA c/l)	(128.702)	(120.320)	(154.805)	(149.592)	(196.558)
AVERAGE BASIC FUEL PRICE 29/05/2020 - 12/06/2020	519.199	499.119	521.525	525.809	468.059
AVERAGE UNIT OVER/(UNDER) RECOVERY 29/05/2020 - 12/06/2020	(158.610)	(148.531)	(147.895)	(143.506)	(193.840)

ANALYSIS MOVEMENT OF AVERAGE OVER/(UNDER) RECOVERY

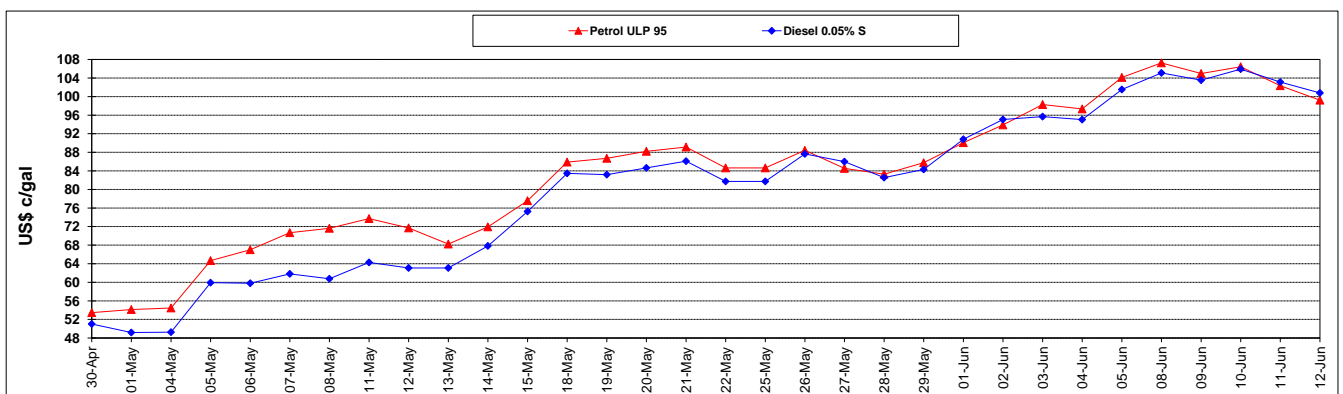
	PETROL 95	PETROL 93	DIESEL 0.05%	DIESEL 0.005%	ILL. PAR.
- MOVEMENT IN INTERNATIONAL PRODUCT PRICES	(194.478)	(183.011)	(183.923)	(179.830)	(226.174)
- MOVEMENT IN EXCHANGE RATE	35.867	34.480	36.028	36.324	32.334
AVERAGE UNIT OVER/(UNDER) RECOVERY 29/05/2020 - 12/06/2020	(158.610)	(148.531)	(147.895)	(143.506)	(193.840)

R/\$ EXCHANGE RATE - (R/\$16.9924 - 12/06/2020)

EXCHANGE RATE USED IN BASIC FUEL PRICE



INTERNATIONAL PRODUCT PRICES OF BASKET USED IN BASIC FUEL PRICE



BASIC FUEL PRICE IN SA CENTS PER LITRE

